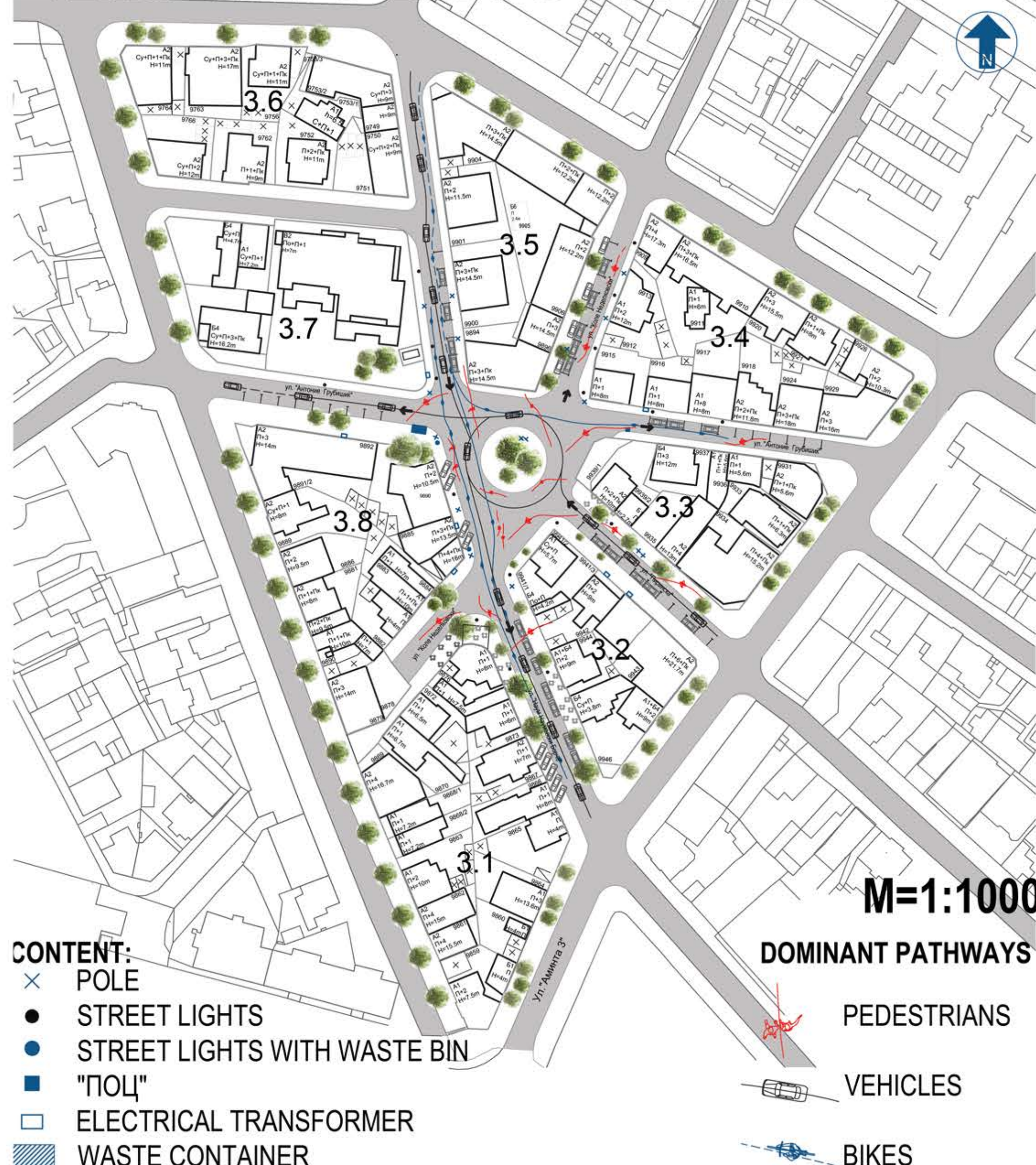
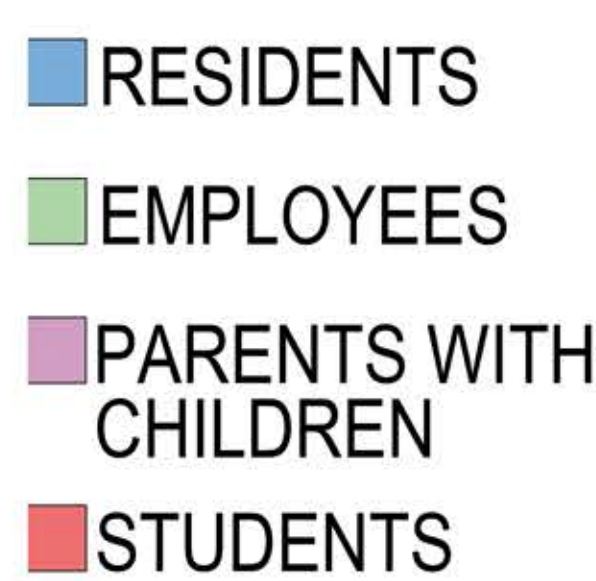




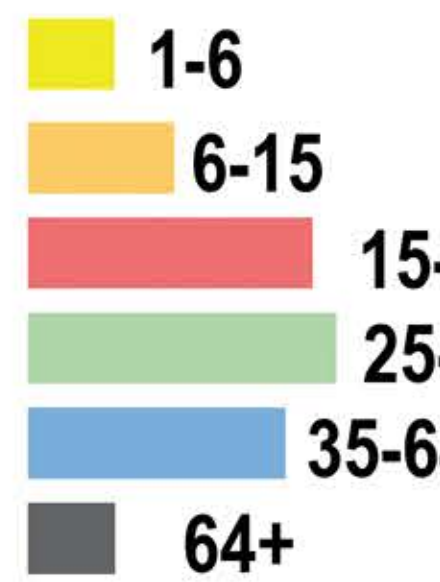
## EXISTING SITUATION



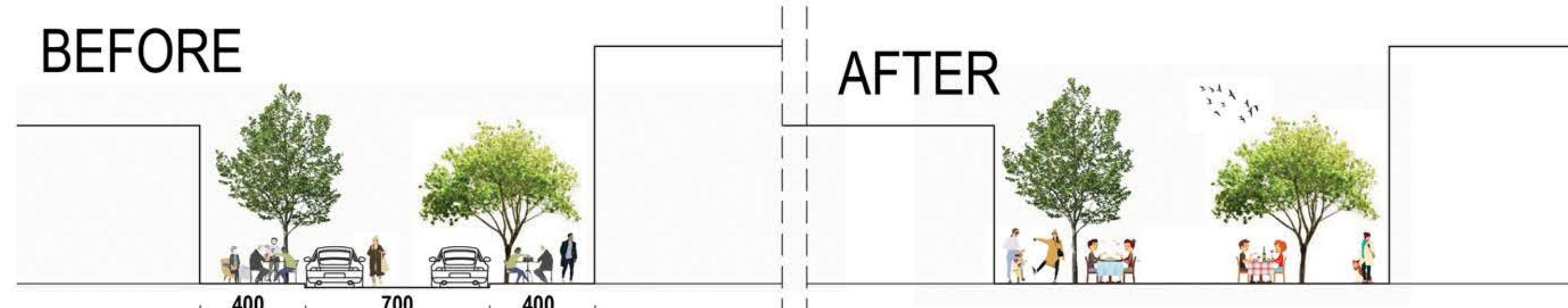
### USERS



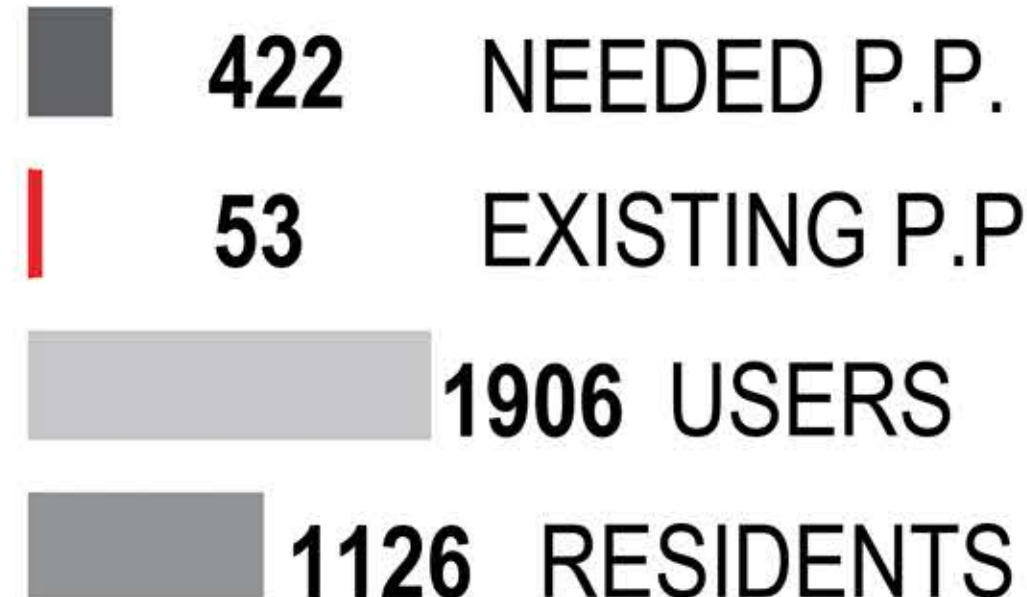
### AGE



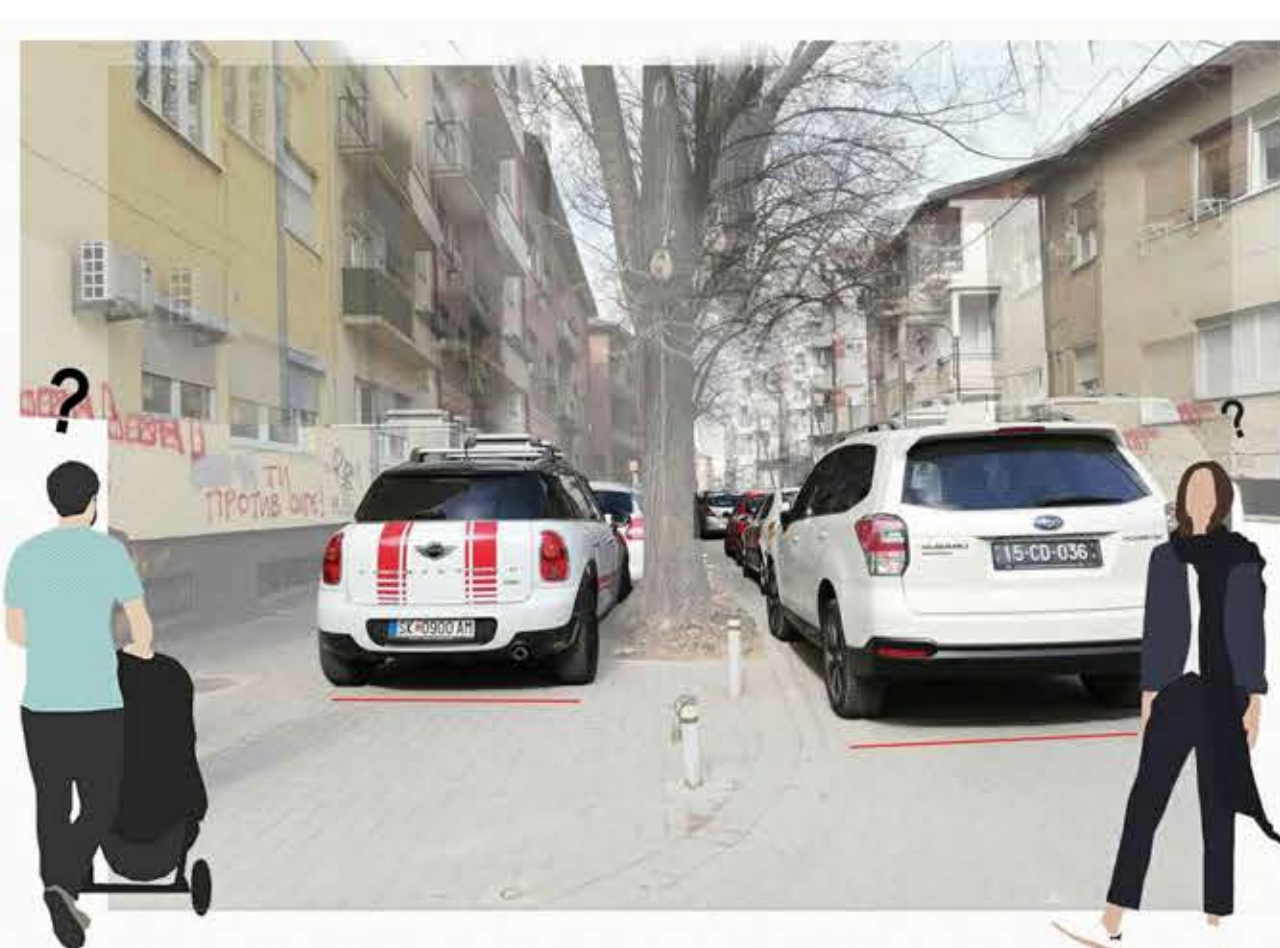
## CORRIDORS



## PROBLEMS

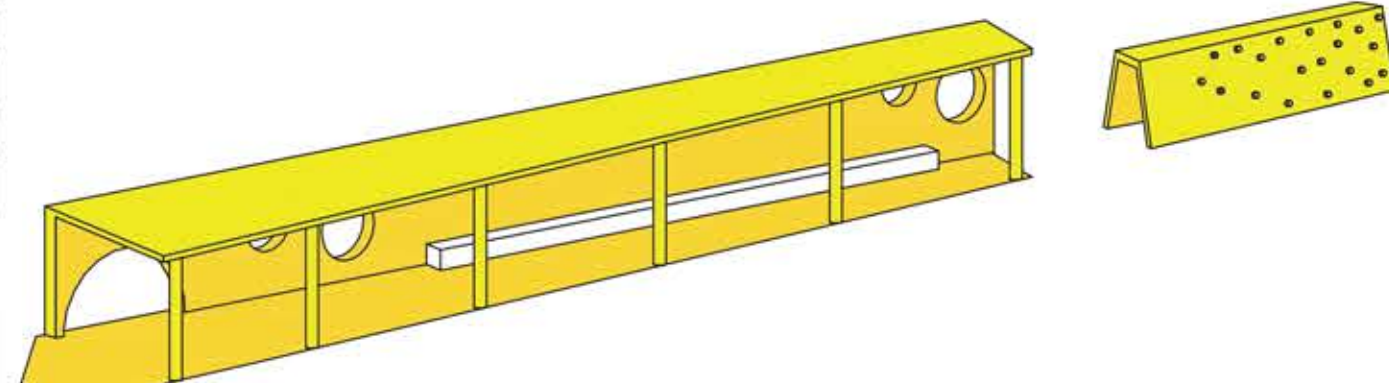


HIGH FREQUENCY OF PEOPLE CIRCULATE ON DAILY BASIS= COMMERCIAL GROUND FLOORS.



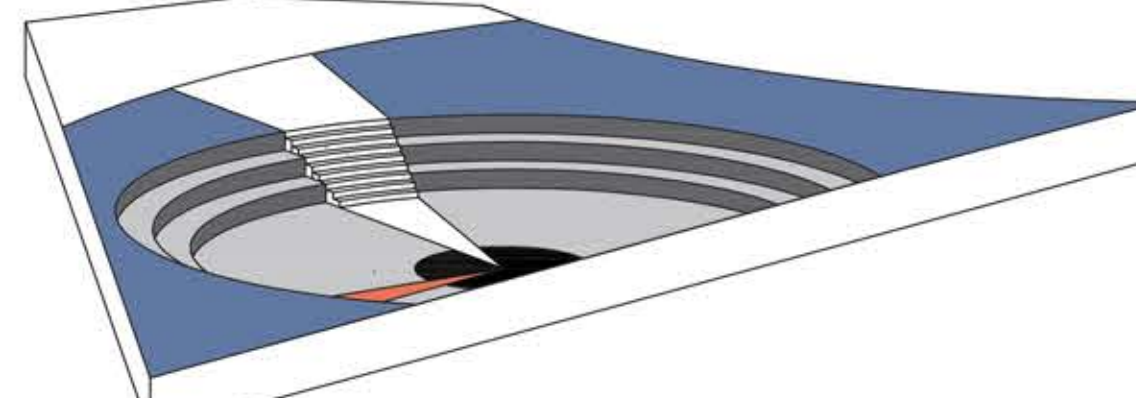
CARS ARE PARKING ON AND THEREFORE BLOCKING ALL THE SIDEWALKS FOR PEDESTRIANS.

## NEW URBAN POINTS/ELEMENTS



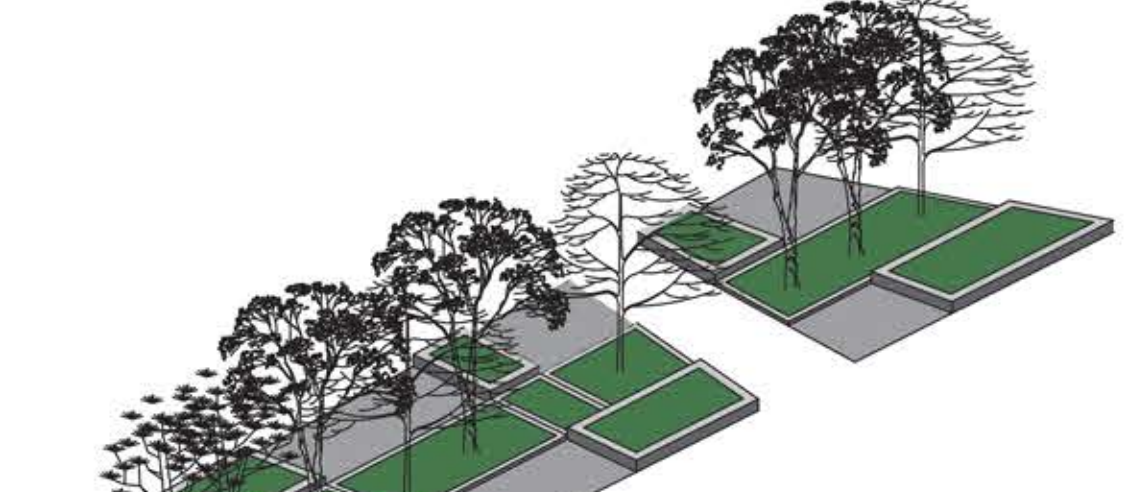
### PORCH

-WEATHER PROTECTION  
-ENTERTAINMENT FOR KIDS  
-LEISURE



### AMPHITHEATER

-SOCIALIZING /INTERACT  
-VIDEO PROJECTIONS  
-CULTURAL EVENTS



### GREEN SPACE

-URBAN "FOREST"



**Authors:** Ljubica Bojadzieva, Jordan Lazoroski, Ivana Kocavska, Angela Kuzmanovska  
**Mentor:** Prof. Divna Pencic, PhD

**IK** Institute of communication studies



НЕ ИГНОРИРАЈ  
**РЕАГИРАЈ**  
за поубав град



British Embassy  
Skopje



Funded by  
UK Government

This product is prepared within the programme *Promoting good governance through citizen engagement for increased transparency and accountability of institutions in North Macedonia* funded by the UK Government with the support of the British Embassy Skopje. The content of this publication does not necessarily reflect the position or the opinions of the UK Government.